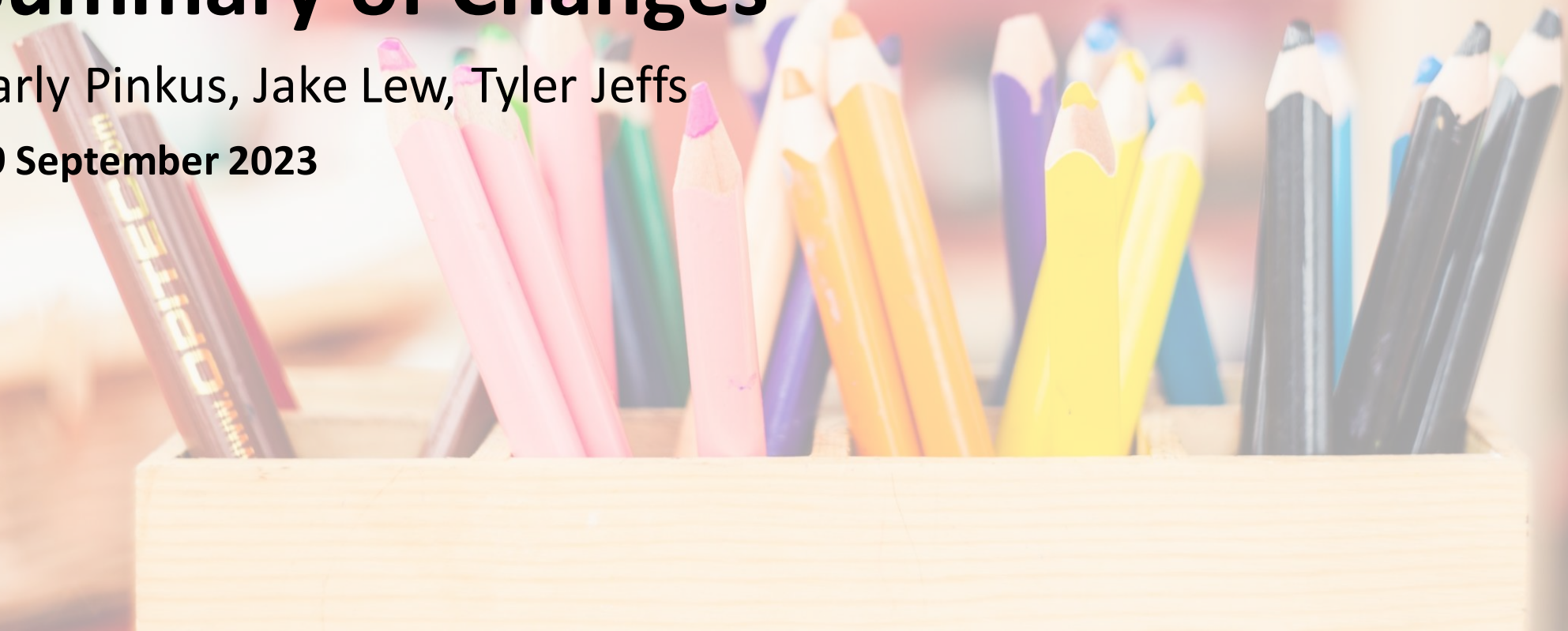


Academy Trust Handbook 2023: Summary of Changes

Carly Pinkus, Jake Lew, Tyler Jeffs

19 September 2023



About BKL



24 Partners



Over 200 people



Based in London –
international network



Certified



Corporation

Winners of



Committed
Member of

**Inclusive
Employers**



Your hosts



Carly Pinkus

Director



Jake Lew

Partner



Tyler Jeffs

Education, Charity and Not
for Profit Specialist

What we'll be covering

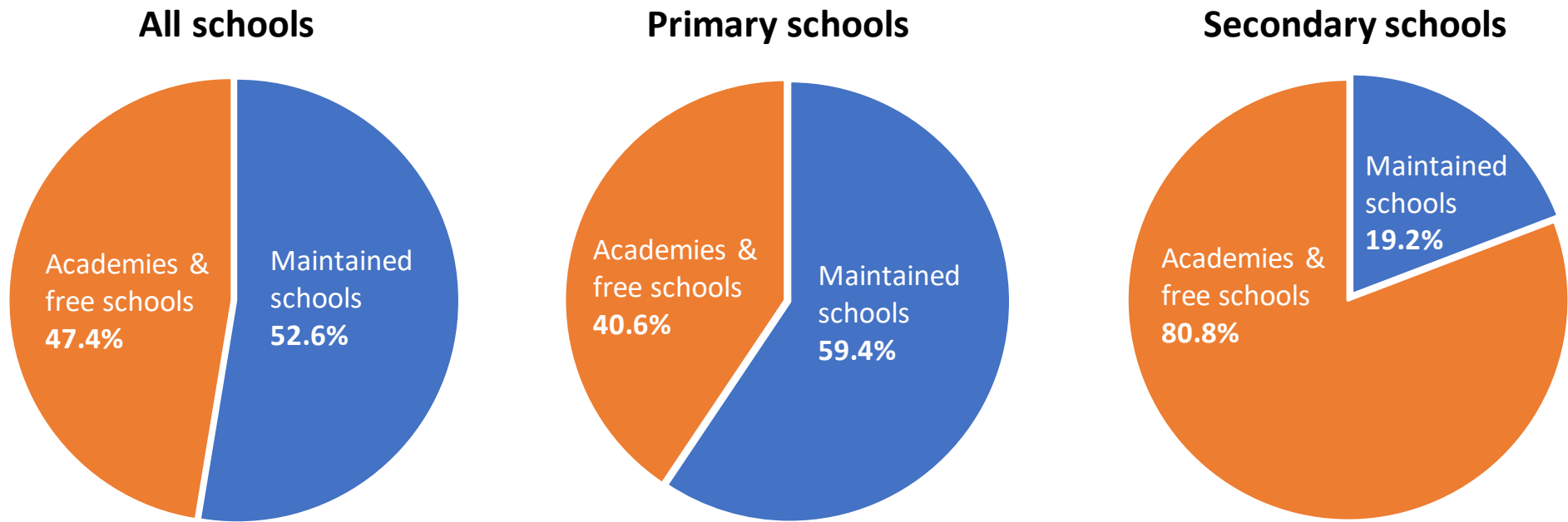
- / Sector Updates
- / Academy Trust Handbook
- / Academy Accounts Direction

Sector update [1/5]

- / Teachers' pay rise confirmed on 31st July of 6.5%, only 3% being funded
- / Support staff pay rise not yet agreed upon. Probably to come towards the end of 2023
- / MSAG (April 23) – probably already spent. More to come in 23/24
- / Reserves clawbacks for large surpluses or holding onto too much money (ranges from 5 to 20 percent)
- / Reinforced Autoclaved Aerated Concrete (RAAC)

Sector update [2/5]

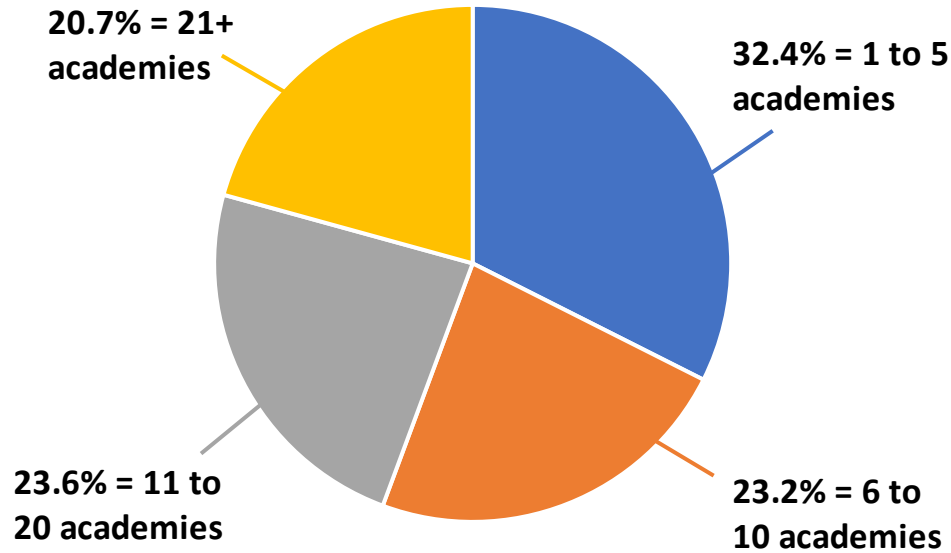
- / Sector trending towards larger MATs – expect this to continue. However, there is an election looming



Source: DfE, March 2023

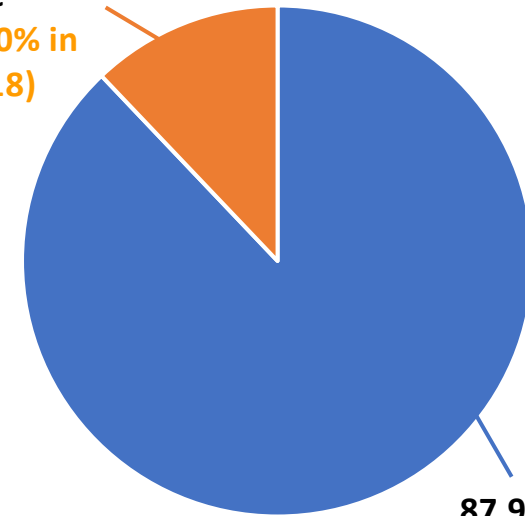
Sector update [3/5]

January 2023



January 2023

12.1% of academies are standalone
(Down from 20% in December 2018)



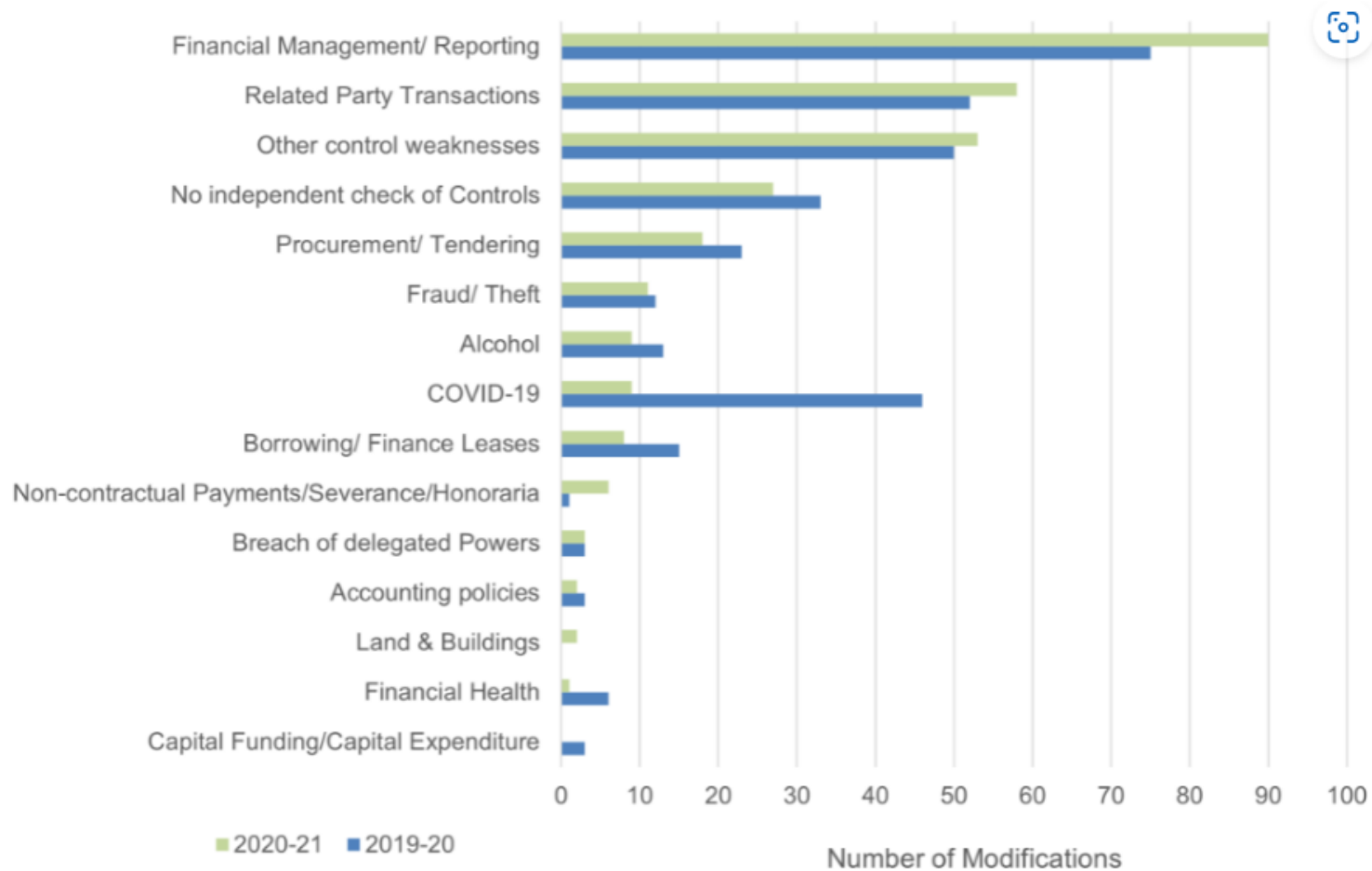
87.9% of academies are in 2+ School Trusts

	Dec 2018	Jan 2023
1 to 5	69%	32.4%
6 to 10	20%	23.2%
11 to 20	8%	23.6%
21 plus	3%	20.7%

Source: DfE

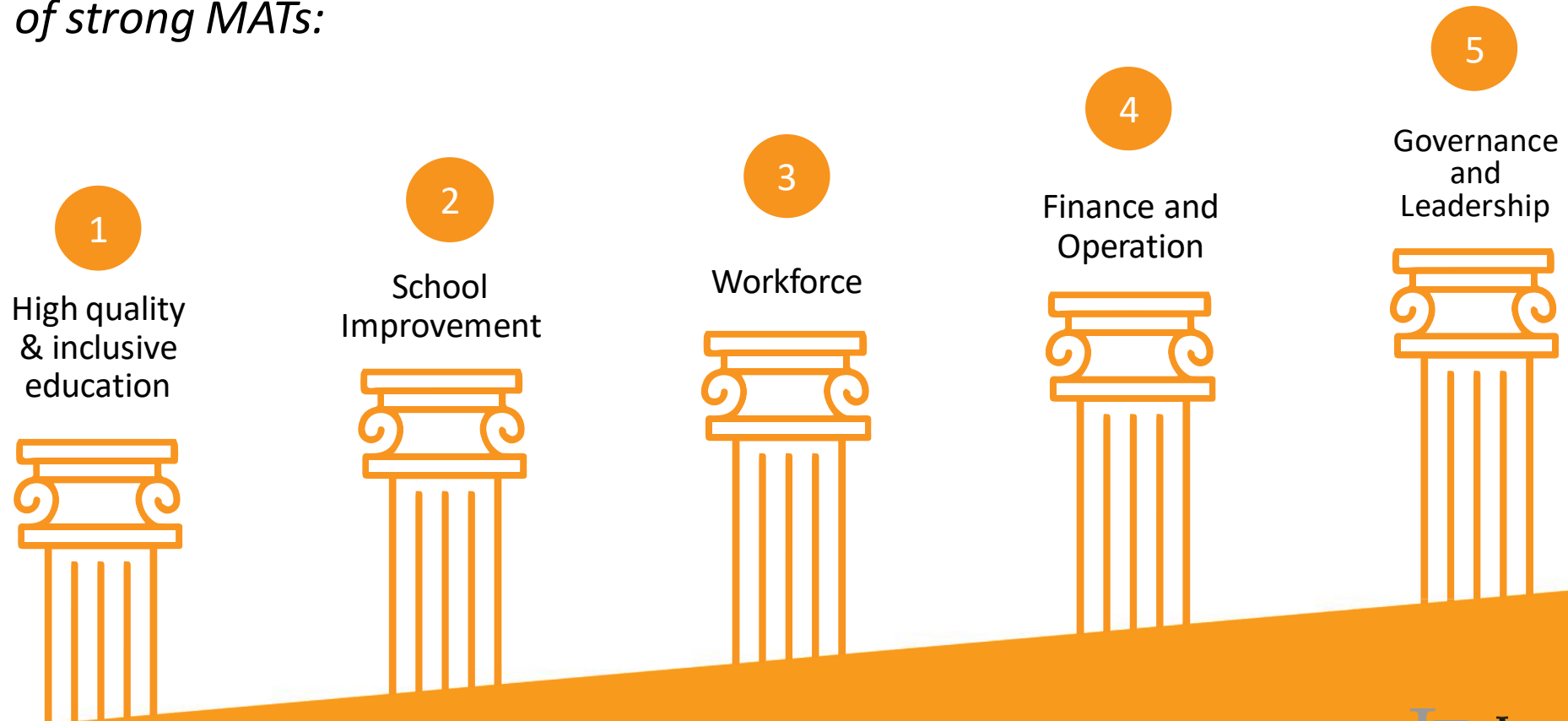
Sector update [4/5]

/ DfE's Assurance work on 21/22 accounts shows common regularity trends:



Sector update [5/5]

- / Change in Government strategy from White Paper released in early 2022. Previous policy was that all schools were to be in MATs by 2030. This has been softened to: *Most schools should be in MATs by 2030 and follow the five pillars of strong MATs:*



“Over time, the Department would like all schools to be in a strong multi-academy trust”

Nick Gibb, Minister of State for Education – 9 Feb 2023

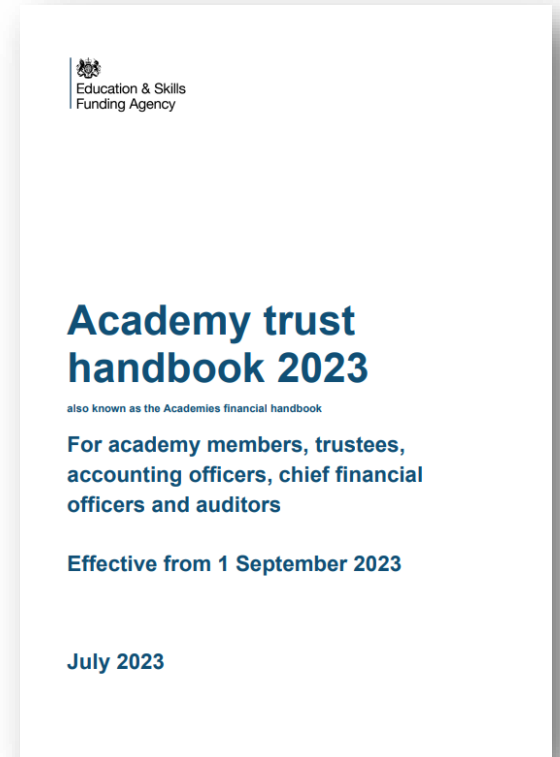
Academy Trust Handbook [1/2]

/ Related party transactions

- Commencement and renewal of contracts
- Threshold increase from £20,000 to £40,000
- Removal of aggregate requirements
- Additional exemptions

/ Roles and responsibilities

- Staff trustees no longer allowed
- Accounting Officer and CFO must not be the same person
- Financial challenge at trustees' meetings



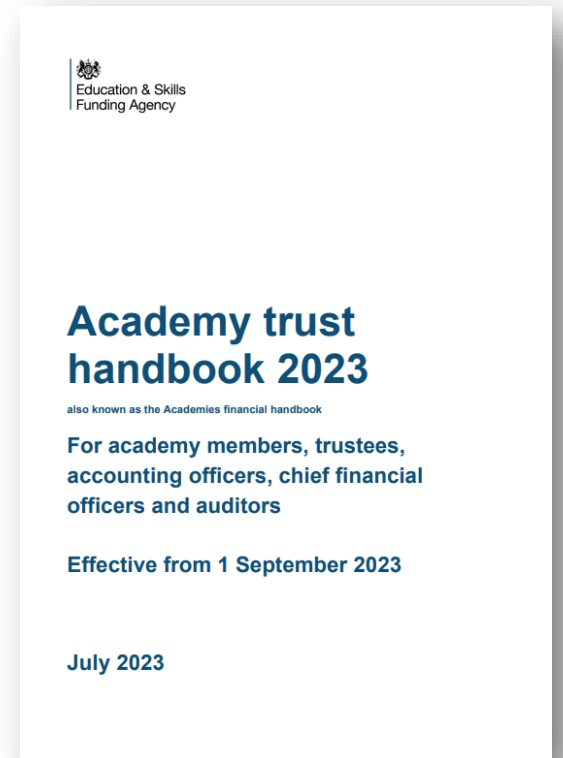
Academy Trust Handbook [2/2]

/ RAAC / good estates management

- Additional publications
- Expanded guidance

/ Other

- EV salary sacrifice
- Governance statement



*“Simpler, shorter and
more sharply focused”*

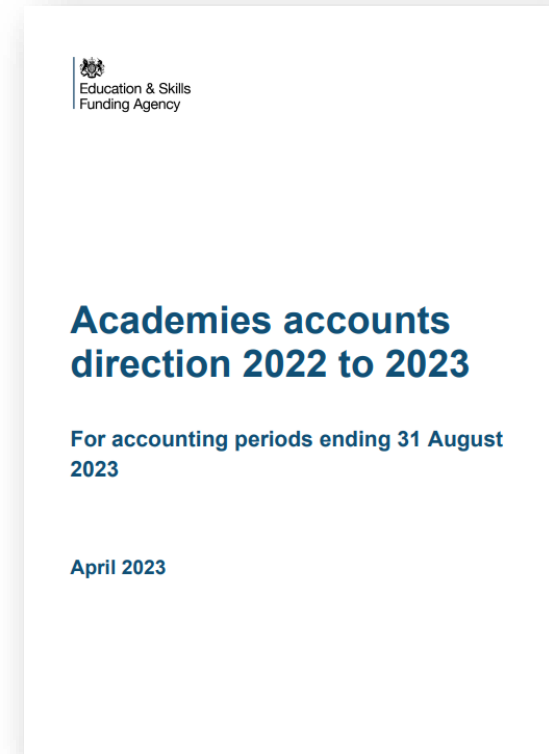
*Baroness Barran,
referring to the rework done to the ATH for 2023*



Academy Accounts Direction

There is nothing new this year. However, clarifications are made on:

- / School buildings' safety risk
- / Material income streams
- / Concessionary loans
- / Teaching assistants
- / LGPS liability guarantee



“The curriculum lives in the shadow of finance. My £2.2 million deficit is the new normal”

*Simon Oxenham, Director of Finance at Southend School for Boys,
ISBL National Lead on school finance and efficiency*

How we can help you

- / Trustee training
- / Internal scrutiny
- / Annex G audits
- / Due diligence
- / VAT and tax advice (including on subsidiaries)
- / Setting up subsidiary companies
- / Budget forecasting



Any questions?

Thank you



Carly Pinkus

Carly.Pinkus@bkl.co.uk



Jake Lew

Jake.Lew@bkl.co.uk



Tyler Jeffs

Tyler.Jeffs@bkl.co.uk

www.bkl.co.uk